



**SUPRA 950 U**



*All the advantages of SUPRA in a new undermount unit.  
For large-sized trucks.*

The new **SUPRA 950 U** is an extremely powerful, yet quiet, undermount diesel truck unit that combines exceptional cooling capacities with robust reliability.

The ideal solution for vehicles with high cabs or trucks with draw-bar drailers, SUPRA 950 U can also be adapted onto city-trailers up to 90m<sup>3</sup>.

Also available as SUPRA 950 U Mt° for multi-temperature applications.

▶ **Highly resistant to humidity, pollution and dust** meaning you can carry out your business in complete confidence

▶ **Exceptional reliability and performance** that ensures you enhanced product protection and low operation costs

▶ **Low-noise operation** so that you can operate at all hours even in noise-sensitive areas

▶ **User-friendly EasyCOLD® microprocessor control** for a unit that is simple to operate

▶ **A new generation extra-flat evaporator** to give you optimized loading capacity.



■ **Condensor**

**Dimensions:** 1860 x 823 x 631 mm

**Weight:** 553 kg

■ **Refrigeration capacity**

**Road**

0°C: 10 700 W  
- 20°C: 6 300 W

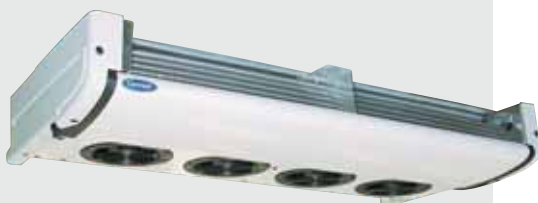
**Standby**

0°C: 8 500 W  
- 20°C: 5 500 W

Ambient temperature at + 30°C (per ATP procedure)

■ **Airflow**

2925 m<sup>3</sup>/h (constant at high & low speed)



■ **Evaporator**

**Dimensions:** 1 450 x 752 x 219 mm

**Weight:** 52 kg

**T model**

- HFC R404A refrigerant
- 1-1 litre Tri-Vortex diesel engine
- 05G 6-cylinder compressor
- Standby motor
- Remote plug
- Low-noise sound control kit
- Automatic hot gas heating and defrost system
- Manual defrost
- Directly accessible oil & coolant gauges
- Two sight glasses to monitor refrigerant level
- Dry air, fuel and remote oil filters
- Pre-installed accessory package (electric fuel pump, fuel lines, battery cables)
- EasyCOLD® Microprocessor control system:
  - Automatic Start/Stop
  - Visual displays for: cooling - heating - defrost - auto-start - temperature
  - Programmable defrost interval
  - Battery voltage indicator
  - Automatic diesel restart
  - Cab command with: Automatic pre-trip unit check function - Back-lit cab command display and keys to set and programme the microprocessor parameters

**Safety devices**

- Standby motor overload protection
- Standby motor short cycle protection
- High coolant temperature protection
- Low engine oil protection
- Low and high refrigerant pressure protection
- Receiver tank pressure relief valve

**S model**

Version without low-noise sound control kit

**Accessories**

- Supply air sensor to avoid top freezing
- Battery
- Battery box
- Fuel tank 90 or 200 l
- Automatic phase reverser
- Fuel heater
- Single compartment control panel & cable extension
- External watertight box for cab command

**New Zealand**  
Transcold Group  
PO Box 26  
Takanini, Auckland  
Ph: (09) 269 0660  
Fax: (09) 269 0661

**Perth**  
TRACS  
3 Tipping Road  
Kewdale WA 6105  
Ph: (08) 9353 4544  
Fax: (08) 9353 4467

**Adelaide**  
RTS Refrigeration  
17 Streiff Road  
Wingfield SA 5013  
Ph: (08) 8262 6535  
Fax: (08) 8349 5166

**Melbourne**  
Carrier Transcold  
PO Box 773  
Sunshine VIC 3020  
Ph: (03) 9314 1933  
Fax: (03) 9314 3911

**Sydney**  
Carrier Transcold  
PO Box 149  
Lidcombe NSW 2141  
Ph: (02) 9648 6100  
Fax: (02) 9648 6101

**Brisbane**  
Carrier Transcold  
PO Box 211  
Archerfield QLD 4108  
Ph: (07) 3276 7433  
Fax: (07) 3272 9500



**Carrier**

A United Technologies Company

**Carrier Transcold Australia**  
National Sales: 1300 130 276  
24hr Service: 1800 448 166

